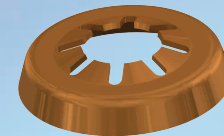
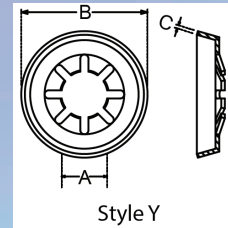


Starlock® Push-On Fasteners Reversed Type



A		B	C	D
Shaft size	Part No:	Outside Diameter	Material Thickness	Style
3/16"	7062	.495"	.015"	Y
7/32"	7182	.602"	.010"	Z
1/4"	7181	.726"	.012"	Z
12.00mm	8162	25.02mm	0.4mm	Z
15.875mm	8115	34.75mm	0.7mm	Y



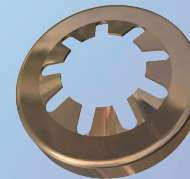
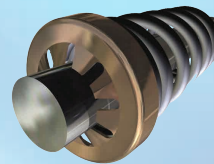
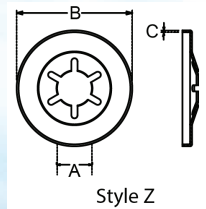
A special Starlock® used where the form is reversed and the edge of the flange turned downwards, whilst retaining Starlock's rigid strength. It can serve a dual purpose on assembly, i.e. housing for a compression spring.

All dimensions shown are subject to engineering tolerances.

These fasteners can be supplied in blue and varnish BV or in mechanical zinc plated DT finishes.

Starlocks® are generally available in spring steel and many supplied in stainless steel.

Non-standard parts may be subject to a minimum order quantity.



Baker & Finnmere Ltd, 199 Newhall Street, Birmingham, B3 1SN, United Kingdom
UK Tel: +44 (0) 121 236 2347 Fax: +44 (0) 121 7224 e-mail: sales@bakfin.com
www.bakfin.com **www.starpress.co.uk**