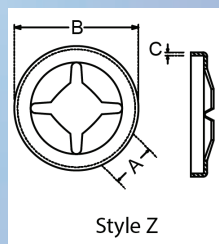
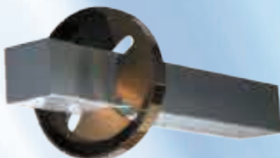
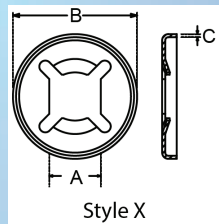
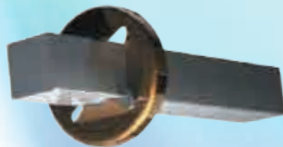
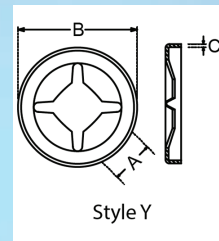
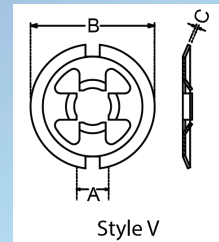
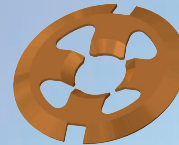
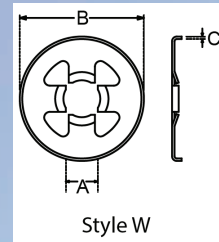
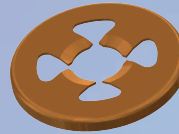


Starlock® Push-On Fasteners For a square shaft



A		B	C	
Shaft Size A/Flats	Part No:	Outside Diameter	Material Thickness	Style
.300"	6152	1.000"	.022"	W
.300"	7023	1.090"	.022"	V
3/8"	8067	1.090"	.022"	V
5.50mm	8070	15.291mm	0.254mm	Y
8.00mm	7031	20.00mm	0.46mm	Y
3/8"	8017	.788"	0.018"	Y
7.00mm	7066	18.44mm	0.4mm	X
8.00mm	7120	20.00mm	0.46mm	Z
8.00mm	8183	20.00mm	0.254mm	Y

This application originated from door lock manufactures. The unusual shape of the piercing is designed to give point contacts on the sides of the square shaft, and extra flexibility gives a wide range of fitting, i.e. part 7023 is suitable for shafts from .300" to .312" with two slots to assist



All dimensions shown are subject to engineering tolerances. These fasteners can be supplied in blue and varnish BV or in mechanical zinc plated DT finishes. Starlocks® are generally available in spring steel and many are also supplied in stainless steel. Non-standard parts may be subject to a minimum order quantity.

- For capped versions please call
Uncapped fasteners are available in:
- Blue and varnish for BV inch sizes
 - Bronze and varnish finish for metric BV sizes
 - Mechanical zinc plated DT finish