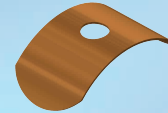
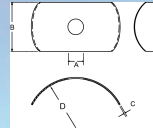




Starlock® Push-On Fasteners Tube washer Type

| A | | B | C | D |
|------------|----------|--------|--------------------|-----------|
| Shaft size | Part No: | Length | Material Thickness | Tube size |
| 1/8" | 7615 | 5/8" | .016" | 5/8" |
| 3/16" | 7707 | 5/8" | .016" | 5/8" |
| 5.00mm | 7495 | 5/8" | 0.4mm | 3/4" |



For applications where it is not necessary to grip the stud, a plain hole tube washer is available.

All dimensions shown are subject to engineering tolerances.

These washers can be supplied in blue and varnish BV sizes, in bronze and varnish for metric BV sizes or in mechanical zinc plated DT finishes.

Starlocks® are generally available in spring steel and many supplied in stainless steel.

Non-standard parts may be subject to a minimum order quantity.

Baker & Finnemore Ltd, 199 Newhall Street, Birmingham, B3 1SN, United Kingdom

UK Tel: +44 (0) 121 236 2347 Fax: +44 (0) 121 7224 e-mail: sales@bakfin.com

www.bakfin.com

www.starpress.co.uk